



1 Dollar Imports

**TRANSFORMING
ROADS WITH
BETTER SAFETY**



1 Dollar Imports

WHO WE ARE

Here you can fulfill all your **ROAD SAFETY PRODUCTS** need at an priced value. We provide Door-to-Door All Inclusive services, so please don't wait just message us or email to get best available quotes in the market with 100% Exclusive rights for new designs also available. Join the small 1 Dollar Imports family of partners and witness a historic moment in the industry.

Together, we can generate more sales for your respected business, opening up opportunities for everyone involved. We take immense pride in the trust and love bestowed upon us by respected funeral supplies importers, funeral homes, suppliers, wholesalers, and companies.

We are serving Companies with a legacy dating back to 1887 in the United States, we have built strong relationships based on reliability and integrity. At our establishment, you can find elegant quality products available for wholesale. Additionally, we offer a unique opportunity to become one of the first few importers to acquire these exceptional cremation urns that are scratchless and dentless. Don't miss out on this chance to stand out in the market and provide your customers with unparalleled quality.





1 Dollar Imports

With over 4000 highly skilled permanent and contractual workforce, all our products are crafted with heart and perfection. Our High Masts and Poles undergo thorough wind tunnel testing, and we are, in fact, one of the few companies in the world to have an actual crash test certification for our Metal Beam Crash Barriers!

Combine that pursuit of perfection with a highly functional wide web network of hundreds of vendor partners, from logistic services, raw material suppliers, and capital goods suppliers - all standing together and committed to our ethos - LIFE DEMANDS, WE DELIVER.

\$250 million+
Annual Turnover

3,428,090 sqft
Infrastructure &
Manufacturing Setup

Cover Area | Uncover Area
784,391 sqft | 2,643,598 sqft

4000+
Highly Skilled
Workforce





1 Dollar Imports

Utkarsh India is a major exporter throughout the globe and ranks amongst the top pan-India manufacturers, suppliers & distributors of –

- Metal Beam Crash Barriers
- Pedestrian Guard Rail
- Polygonal & Octagonal Poles
- High Mast Lighting Structures
- Steel Tubular Poles
- Railway Electrification Structures
- Mild Steel and Galvanised Steel Pipes
- Polymer Pipes, Fittings, and accessories
- Transmission Line Towers for electrification
- Telecom Towers for communication
- Water Tank Metal Structures
- Pre-Fabricated Building Structures
- HDPE Pipes

At Utkarsh India, we follow the strictest manufacturing norms and certifications for our product range, namely - ISO, BS, ASTM, AS, EN, OHSAS, MORTH & SLS.

In addition, with regard to testing facilities, Utkarsh India is equipped with cutting-edge testing labs, having partnered with several International & National testing labs and testing centers like SGS, CE, DNV, BVQI, and TUV, thereby ensuring our unmatched product quality and services.





1 Dollar Imports

WHY UTKARSH INDIA

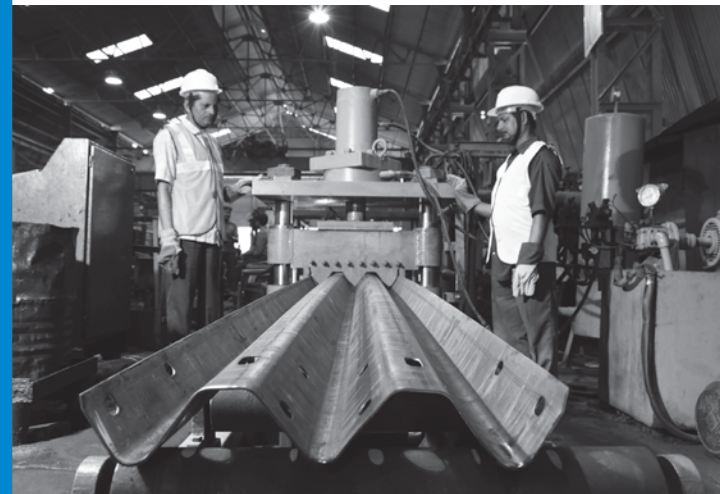
- Utkarsh India provides a single roof for all infrastructural manufacturing requirements.
- We have highly competent in-house design as well as research & development laboratories.
- We host well-equipped, cutting-edge in-house testing facilities.
- We have a sound financial standing to accomplish manufacturing target deadlines.
- Our MOUs with leading National and International raw material manufacturers allow superior quality and easy procurement.
- We are equipped with ample stock holding area for finished products as well as raw material storage.
- Our manufacturing units are closely connected via seaports, national highways, and railways.
- We possess excellent vendor management skills with committed after-sales support.

CRASH BARRIER DIVISION

A premier brand in the metal Beam Crash Barrier Industry, Utkarsh India aims to Protect every journey.

With a combined two-decade worth of experience in manufacturing and providing over 2,00,000+ Km. of metal Beam Crash Barrier, our brand is approved by Government departments & Infra Companies, thereby making us a part of every prestigious project both nationally and globally.

SOLD 2,00,000+ Km
Metal Beam Crash

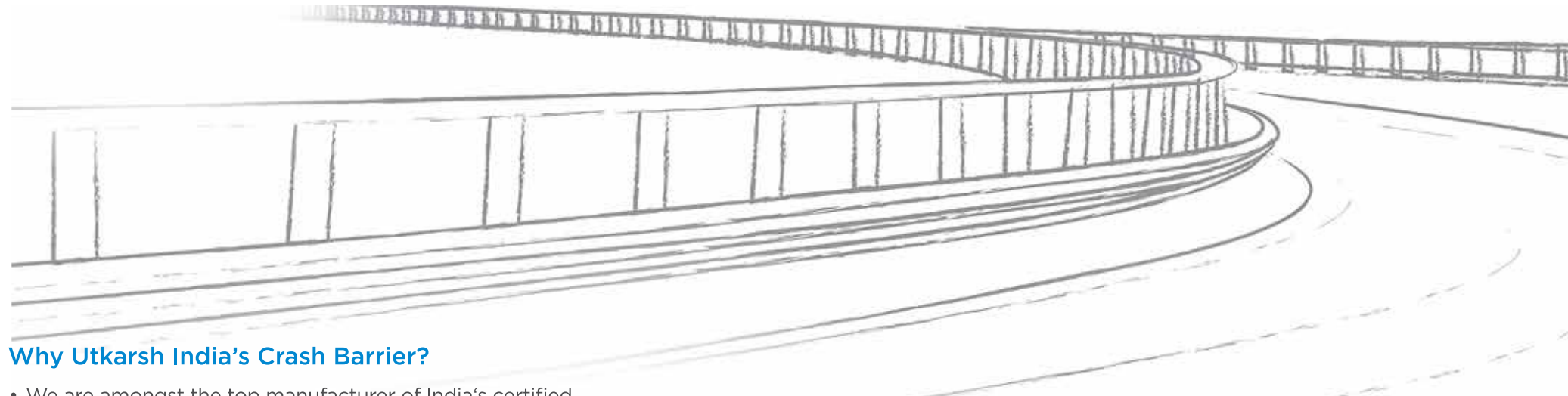


1 Dollar Imports





1 Dollar Imports



Why Utkarsh India's Crash Barrier?

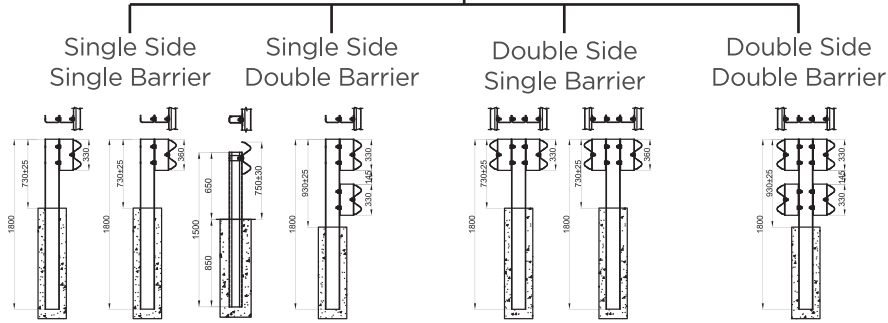
- We are amongst the top manufacturer of India's certified crash tested crash barrier
- Our Raw material for sourced only from SAIL & TATA.
- We have State of art production unit located in proximity of sea ports, Rail route and Indian national highway with expert logistics team for forwarding and logistics facilities
- We have 5 in-house 12.5m long Hot Dip Galvanizing facilities, using only Special High Grade Zinc (99.995% purity) procured from Hindustan Zinc Limited.
- Our Production capacity of 1,44,000 MT/ 6500 km per annum of crash barrier both type "TYPE A" W-BEAM & "TYPE B" THREE BEAM as per MoRTH clause 810/IRC with more than 5000 MT in ready stock for faster delivery
- In-house well equipped testing facilities with qualified quality engineers and advance machineries to test the quality of raw materials, ongoing production and finished material

OUR PRODUCTS

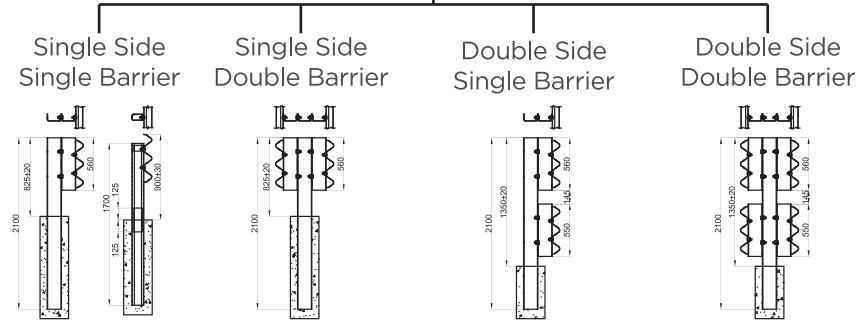


1 Dollar Imports

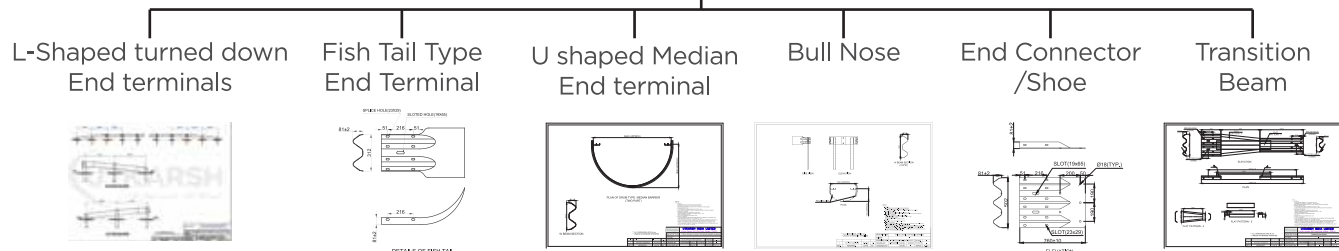
W Beam



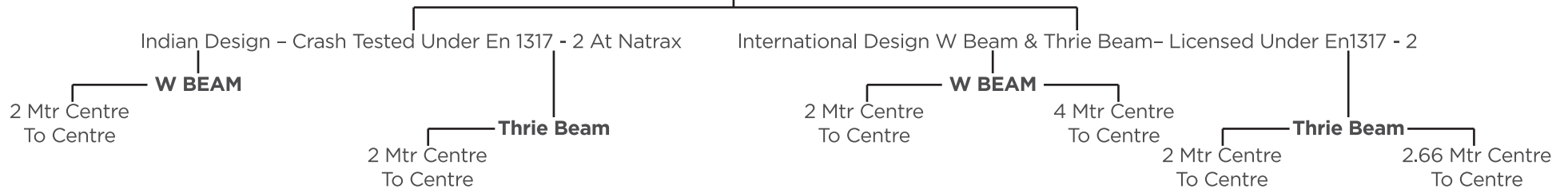
Thrie Beam



Anchorage System



Crash Tested Metal Crash Barriers





1 Dollar Imports

European Standards EN 1317 Road Restraint Systems Norms and System Selector

EN 1317: INSTRUCTION

- Part 1 Terminology and general criteria for test methods
- Part 2 Performance classes, impact test acceptance criteria and test methods for safety barriers including vehicle parapets
- Part 3 Performance classes, impact test acceptance criteria and test methods for crash cushions
- Part 4 Performance classes, impact test acceptance criteria and test methods for terminals and transitions of safety barriers
- Part 5 Product requirements and evaluation of conformity for vehicle restraint systems
- Part 6 Pedestrian restraint systems - Pedestrian parapets
- Part 7 Performance classes, impact test acceptance criteria and test methods for terminals of safety barriers
- Part 8 Motorcycle road restraints systems which reduce the impact of motorcyclist collisions with safety barriers

EN 1317: PART 2: NORMS FOR SAFETY BARRIERS

The norms stipulates that the safety barriers when tested in accordance with Criteria (Table A) defined below shall conform to the requirements of:

1. Containment levels (Table 1)
2. Classes of working width (Table 2)
3. Vehicle Intrusion (Table 3)
4. Impact Severity (Table 4)
- 5 Post Impact Vehicle Response (Table 5)

Table A: Vehicle impact test criteria

Test	Impact speed km/h	Impact angle °	Total mass kg	Type of vehicle
TB 11	100	20	900	Car
TB 21	80	8	1 300	Car
TB 22	80	15	1 300	Car
TB 31	80	20	1 500	Car
TB 32	110	20	1 500	Car
TB 41	70	8	10 000	Rigid HGV
TB 42	70	15	10 000	Rigid HGV
TB 51	70	20	13 000	Bus
TB 61	80	20	16 000	Rigid HGV
TB 71	65	20	30 000	Rigid HGV
TB 81	65	20	38 000	Articulated HGV

Classes of containment (Table 1)

Containment levels				Acceptance test
Low angle containment	T1	/	/	TB 21
	T2	/	/	TB 22
	T3		/	TB 41 and TB 21
Normal containment	N1	/	/	TB 31
	N2	/	/	TB 32 and TB 11
Higher containment	H1		/	TB 42 and TB 11
	L1			TB 42 and TB32 and TB 11
	H2	/		TB 51 and TB 11
	L2			TB 51 and TB32 and TB 11
	H3	/		TB 61 and TB 11
	L3			TB 61 and TB32 and TB 11
Very high containment	H4a	/		TB 71 and TB 11
	H4b			TB 81 and TB 11
		L4a	/	TB 71 and TB32 and TB 11
		L4b		TB 81 and TB32 and TB 11

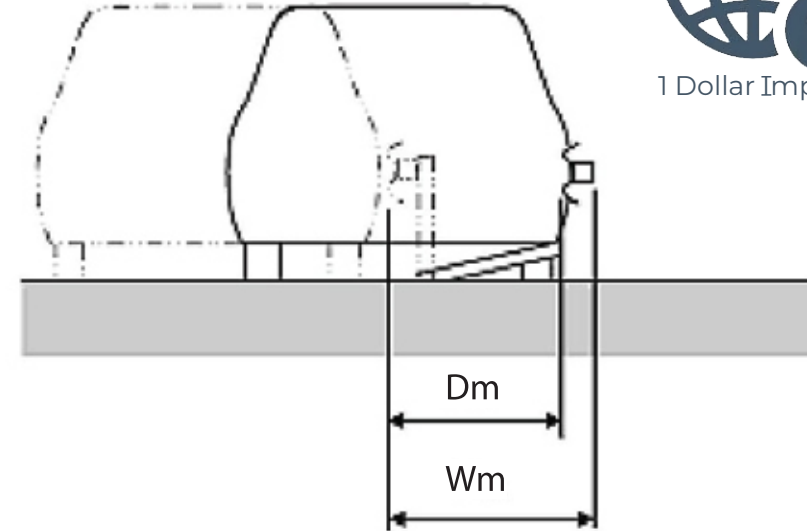
NOTE 1 Low angle containment levels are intended to be used only for temporary safety barriers. Temporary safety barriers can also be tested for higher levels of containment.

NOTE 2 A successfully tested barrier at a given containment level should be considered as having met the containment requirements of any lower level, except that N1 and N2 do not include T3, H-Levels do not include L-Levels and that H1, ..., H4b do not include N2.

NOTE 3 Because testing and development for very high containment safety barriers in different countries has taken place using significantly different types of heavy vehicles, both tests TB 71 and TB 81 are included in the standard at present. The two containment levels H4a and H4b should not be regarded as equivalent and no hierarchy is given between them. The same holds for the two containment levels L4a and L4b.

NOTE 4 The performance of Containment Classes L is enhanced in respect to the corresponding H classes by the addition of Test TB 32.

Working Width (Table 2)



Classes of normalised working width levels	Levels of normalised working width m
$W1$	$W_N \leq 0,6$
$W2$	$W_N \leq 0,8$
$W3$	$W_N \leq 1,0$
$W4$	$W_N \leq 1,3$
$W5$	$W_N \leq 1,7$
$W6$	$W_N \leq 2,1$
$W7$	$W_N \leq 2,5$
$W8$	$W_N \leq 3,5$

NOTE 1 In specific cases, a class of working width level less than $W1$ may be specified.

NOTE 2 The dynamic deflection, the working width and the vehicle intrusion allow determination of the conditions for installation of each safety barrier and also to define the distances to be provided in front of obstacles to permit the system to perform satisfactorily.

NOTE 3 The deformation depends on both the type of system and the impact test characteristics.



1 Dollar Imports

Vehicle Intrusion (Table 3)

Classes of normalised vehicle intrusion levels	Levels of normalised vehicle intrusion m
$VI1$	$VI_N \leq 0,6$
$VI2$	$VI_N \leq 0,8$
$VI3$	$VI_N \leq 1,0$
$VI4$	$VI_N \leq 1,3$
$VI5$	$VI_N \leq 1,7$
$VI6$	$VI_N \leq 2,1$
$VI7$	$VI_N \leq 2,5$
$VI8$	$VI_N \leq 3,5$
$VI9$	$VI_N > 3,5$

NOTE 1 In specific cases, a class of vehicle intrusion level less than $VI1$ may be specified.

NOTE 2 The dynamic deflection, the working width and the vehicle intrusion allow determination of the conditions for installation of each safety barrier and also to define the distances to be provided in front of obstacles.

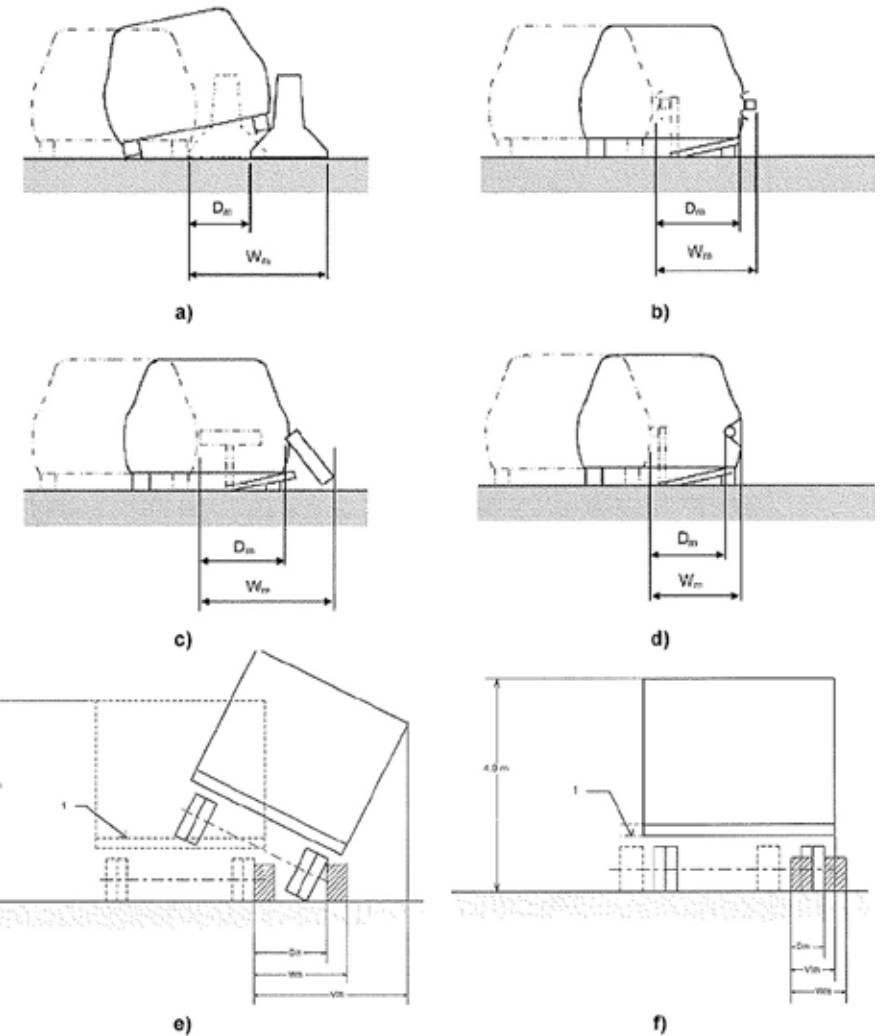
Impact Severity Level (Table 4)

Impact severity level	Index values		
A	$ASI \leq 1,0$	and	$THIV \leq 33 \text{ km/h}$
B	$ASI \leq 1,4$		
C	$ASI \leq 1,9$		



1 Dollar Imports

Post Impact Vehicle Response (Table 5)



Longitudinal Barriers (H2 Containment Level) As per European Standards 1317, Part 2: H2W3, H2W4, H2W5 (Thrie Beam)

Metal Beam Class Barrier/Safety barrier on ground conforming to Class **H2W3, H2W4, H2W5**, certified in accordance with:
European Standard EN 1317: Part 2
IRC 119 - 2015 Recommendations
Crash tested for: Bus of 13000 kgs and Car of 900 kgs



1 Dollar Imports

SYSTEM TYPE

Containment Type	Higher Containment
Containment Class	H2
Dynamic deflection	1.2m
Working Width	W3(<1.0 m)W4 (<1.3 m)W5 (<1.7 m)
Vehicle Intrusion	1.5 m - VI 5
ASI	A

SYSTEM CHARACTERISTICS

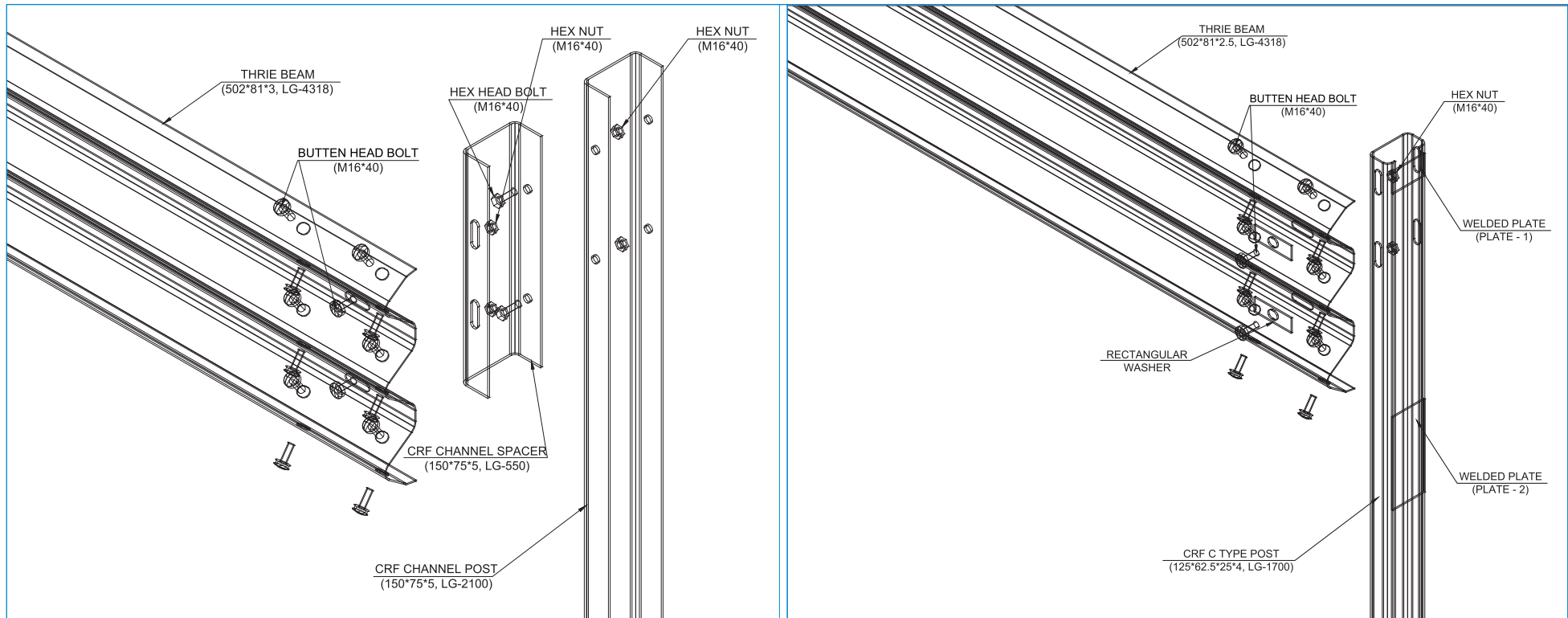
Containment width (m)	0.221
Containment height (m)	0.95
Distance between posts (m)	2.00/2.66



UTKARSH Crash Barrier
 Model A: UTKARSH H2W4 FE03H2 2.00M (3n)
 Model B: UTKARSH H2W4 FE03H2 2.66M (3n)
 Model C: UTKARSH H2W5 TSSSB 2.00M (3n)



1 Dollar Imports



MATERIAL SPECIFICATIONS & STANDARDS

Steel	IS2062 E350 & E410 or equivalent
	IS5986/10748 Fe - 410/360 or equivalent
Galvanization	EN 1461
Screws	4.6 Grade
Bolts	4.6 Grade

MATERIAL SPECIFICATIONS & STANDARDS

Steel	EN 10025 S355JR/275JR or equivalent
Galvanization	EN 1461
Screws	4.6 Grade
Bolts	4.6 Grade





1 Dollar Imports

Longitudinal Barriers (H1 Containment Level) As per European Standards 1317, Part 2: H1W3, H1W4, H1W5 (W Beam)

Safety barrier on ground conforming to Class **H1W3, H1W4, H1W5**, certified in accordance with:

European Standard EN 1317: Part 2

IRC 119 - 2015 Recommendations

Crash tested for: TRUCK of 10000 kgs and Car of 900 kgs

SYSTEM TYPE

Containment Type	Higher Containment
Containment Class	H1
Dynamic deflection	1.5m
Working Width	W3(<1.0 m)W4 (<1.3 m)W5 (<1.7 m)
Vehicle Intrusion	1.7 m - VI 5
ASI	A

SYSTEM CHARACTERISTICS

Containment width (m)	0.221
Containment height (m)	0.75
Distance between posts (m)	2.00/4.00





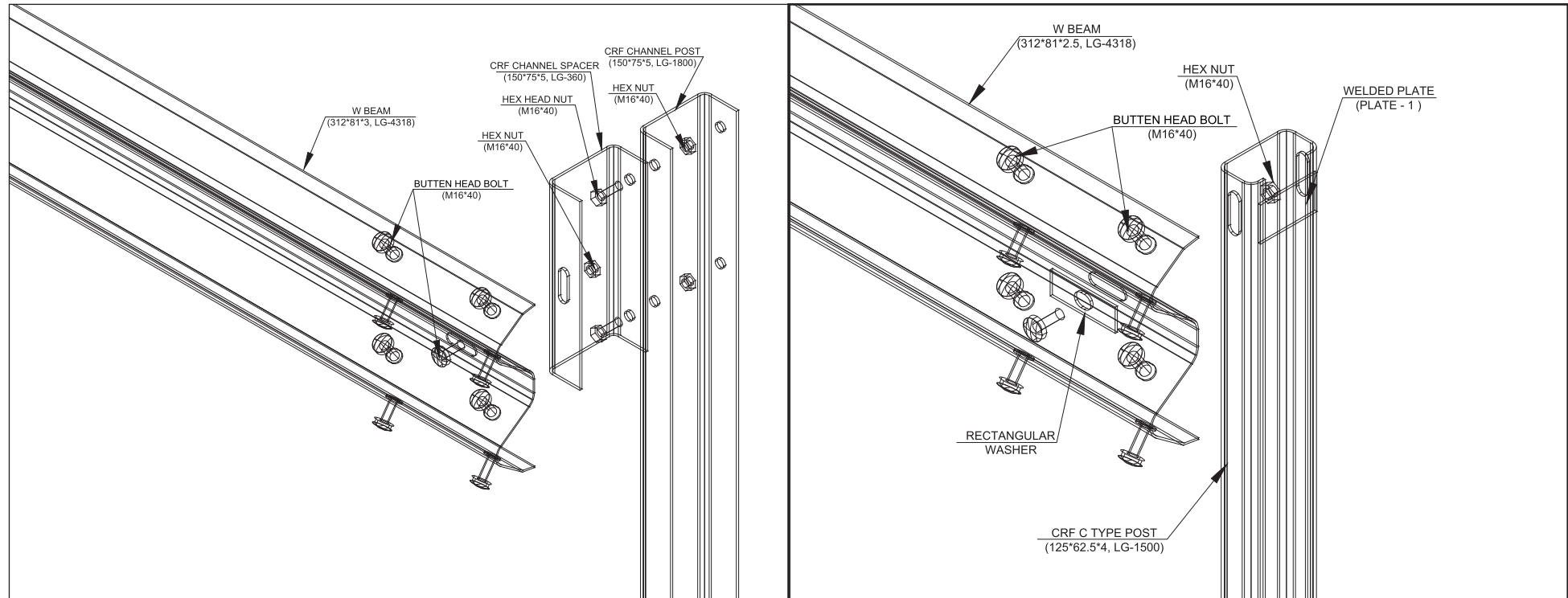
1 Dollar Imports

UTKARSH Crash Barrier

Model A: UTKARSH H1W4 AG02 2.00M (2n)

Model B: UTKARSH H1W4 AG04 4.00M (2n)

Model C: UTKARSH H1W4 WSSSB 2.00M (2n)



MATERIAL SPECIFICATIONS & STANDARDS

Steel	IS2062 E350 & E410 or equivalent IS5986/10748 Fe - 410/360 or equivalent
Galvanization	EN 1461
Screws	4.6 Grade
Bolts	4.6 Grade

MATERIAL SPECIFICATIONS & STANDARDS

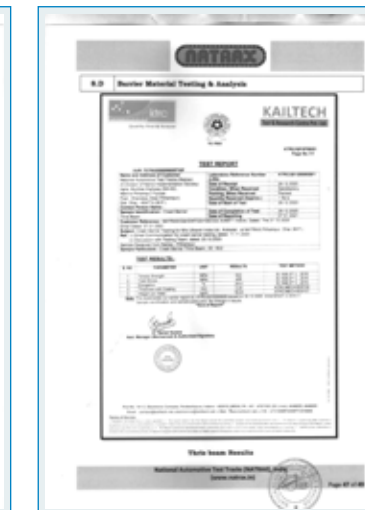
Steel	EN 10025 S355JR/250JR or equivalent
Galvanization	EN 1461
Screws	4.6 Grade
Bolts	4.6 Grade



CERTIFICATIONS



1 Dollar Imports



PRESTIGIOUS PROJECTS

NH 223 (New NH - 4) Project
Andaman Trunk Road Project NH 4
Border Road Organization
Thumalacher - Guntur Road Project
Diwancheruvu Road Project
Kurnool Road Project
Bharatmala Prayojna
Gobuk - Sijhon Nallah SARDP-NE Project
Border Road Organization (Tawang)
Border Road Organization (Bhalukpong)
Passighat Road Project
Assam State Highway Project
NH 54 Project
NH 37 Project
SH 81, Aarah
BANGRAGHAT Road, Muzaffarpur - BSRDC Project
Motihari - Raxaul Road Project NH 28, Bihar
Patna-Bakhtiyarpur NH-30
Kotwa - Mujaffarpur
Aarah- Bojhpur Project
Raipur Ring Road Project
CHRDC - Word Bank Project
Nawapara - Rajim Road Project
Bijapur Road Project
Dwarka Expressway
Karaswada - Porvorim - Pnanaji - Bambolim NH - 17, Goa
Falla - Kalavad Road Project (SH)
Jasdan - Bhavnagar Road Project (SH)
Chiloda- Gandhinagar Highway NH 147
Gir - Somnath Road Project (SH)
Valsad Road Project
Sardar Sarovar Project (SH)
Bhuj Airport - Khavada Road Project NH 341
Morbi Road project
Banashkatha Road Project

Delhi-Mumbai-Vadodara Expressway
Bhiwani-Mandal-Jind NH 709 A, Project, Haryana
Trans-Haryana Expressway or Ambala-Narnaul Expressway (NH 152D)
Nigulsari - Babanagar Road Project, Kinnaur, Himachal Pradesh
Border Road Organization (Kinnaur)
Border Road Organization (Kullu)
Border Road Organization (Anantnag)
Border Road Organization (Rajauri)
Udhampur Ramban Road Project
Border Road Organization (Kargil)
Hazaribag - Chatra Road Project
Gawan - Satgaon Road Project
Jamtara to Dumka Road Project Phase II
Barhet to Sahebganj Road Project Phase IV
Tundi Highway project
Ranchi - Rargaon NHAI Project, NH-33
Barahi - Hazaribag NH 33 Project
Giridih-Jamua-Sarwan
Bijapur - Humnabad Road Project
Hubli - Hospet NH 63 Project
Bidar Road Project
Haveri Road Project
NELAMANGALA DEVIHALLI Project
NH 7 Pallakad
Kozhikode Road Project
Dharmasala - Thaliparambu - Kannur Road Project
Gwalior Shivpuri Project
Dewas Road Project, NH 3 Project
Delhi-Vadodara-Mumbai Expressway
Bhopal- Indore Highway
Parbhani-Gangakhed Road Project NH 752
Naigaon Bandi - Mangrulpir Road Project NH 161 A
Medshi-Washim Road Project
Washim - Pangare project
Gomewadi-Gtpadi Road Project
Sangli Road Project



1 Dollar Imports



1 Dollar Imports

MSRDC Road Project Pkg 17,18 & 29
Karad-Vita Road Project
Nashik Road Project
Beed Road Project
Delhi-Mumbai-Vadodara Expressway
Manipur SH Project
Meghalaya SH Project
Rulkhau - Lawngtali Road Project
Nengpuitlang - Lawngtali Road Project
Merangkong-Tamlu-Mon Road Project
Porba Road Project
Rimuli - Koida NH 215 (New NH 520)
Bamur - Kadalighar - Sarapali NH 135B Project
Malgangiri Road Project
Sambalpur- Rourkela Road Project
Gopinathpur-Badeswar Project
Talchar-Kamakhyanager Bypass Road Project
Bahugram-Jagatpur Road Project
Singhara - Bijabahal Road Project
Bahragora-Singhara Road Project
Ludhiyana - Loddawal Bypass
Phagwara Elevated Highway
Delhi - Amritsar - Katra Project
Jaisalmer- Tanot- Longewala-Khaba-Khuri-
Munabao-Barmer Road Project
Bharatmala Project NH 754
Rajasthan Refinery Project
Bhilwara Road Project
Udaipur - Shamalaji Road Project
Jhalaewar Road Project
Bhopalghar-Jodhpur Project
Balicha Bypass Project
State Highway Project S H 22
Border Road Organization (Chandmarii)

Bharatmala Project NH 227
Kanyakumari-Etturavattam
Selam Road Project
Kolachi Road Project
Kanchipuram Road Project
NH-365 Road Project
Madugullapally Road Project
NH 161, Ramsanpalle - Mangalore
Rampur-Kathgodam Project
Purwanchal Expressway
Gorakhpur NHA I Project, NH-87
Eastern Peripheral Expressway NH-NE II
Lucknow to Sultanpur Expressway
Agra -Lucknow Expressway
Bundelkhand Expressway
Ayodhya-Gorakhpur Highway
Meeruth - Bagpat Road
Outer Ring-Road
Rampur Kathgodam NH 87 Project
Chandrapuri- Rudraprayag NH 109
Kund Bypass Project
Rudraprayag Bypass Road
Lohaghat-Champawat Road Project
Baharagora-Singhara NH 6 Project
Ghoshpukur- Salsabari NH 31D Project
Kharagpur-Balasore NH-6
Kolkata - Santragachi Road Project
Border Road Organization (Darjeeling)

**OUR EXPORTING
COUNTRIES
MIDDLE EAST COUNTRIES & EUROPE**



Road Safety Catalogue 2023



- ▢ Road Safety Products
- ▢ Road Reflective Signages
- ▢ Railway & Airports Signages



LINEAR DELINEATOR SYSTEM (LDS) SOLAR TRAFFIC BLINKER



LINEAR DELINEATOR SYSTEM (LDS)

Designed for continuous enhanced road guidance along concrete barriers, centre round about & metal guards. These provide Night time visibility at locations where normal sign boards cannot be installed. These **LDS** are fabricated using micro prismatic reflective sheeting & provide superior reflectivity at wider angles.

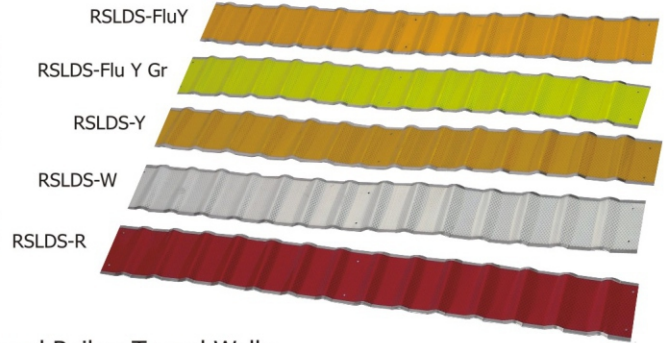
LDS is intended for the linear reflectorization of Concrete Barriers & Metal Guardrails. It provides Retroreflection across a very wide range of entrance & observation angles.

Applications

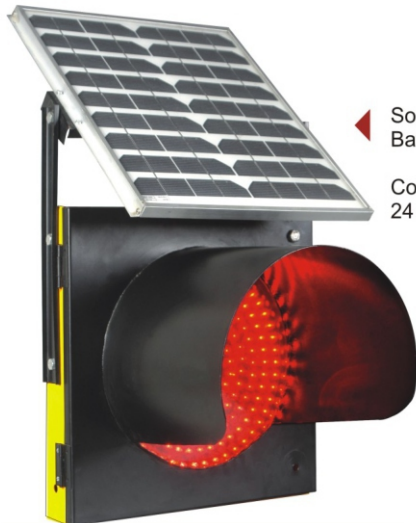
- Highway Clover Leaf • Exit Curves • Concrete Barriers • Metal Guard Rails • Tunnel Walls
- Gap in Verge • Bridge Guard Rails • Approach to Bridges • Centre Round About

Features

Aluminium Substrate • Size - 850 x 100mm • Pre-punched Holes • Hemmed Edges • Available in all colours



SOLAR TRAFFIC BLINKER/FLASHER GTF - 300/12



- ◀ Solar Panel - 16 Volts , 10 W
- Battery - 12 Volts, 10 AH
- Maintenance Free
- Colour - Red/Amber
- 24 Hours Flashing

SOLAR ROAD STUDS



Self-illuminating in dim areas or during night time. Solar rechargeable batteries for continual performance without much maintenance . Super bright LEDs with a viewing distance of 500-800 metres. Equipped with prismatic reflective lens on each side ensure maximum reflectivity. Made up of highly compressive material, can sustain over 10 tonnes. Water resistant.



PVC TRAFFIC SAFETY CONES

PVC TRAFFIC SAFETY CONES

These Traffic Safety Cones are made of special PVC material making them highly flexible and durable. If a vehicle hits a cone, it does not get damaged and comes to its original state. A high reflective sleeve/sheeting is fixed on it for better vision at night and bad weather conditions. It also has provision for fixing of plastic chain or caution tape. These are also available with heavy weight base fixed at the bottom, due to which it does not fly-off with fast traffic or winds

Applications

Centre Lane Division
Parking Lots
Temporary Barricades
No Entry Zones
Men at Work Zones

Diversion on Roads
Traffic Controlling
Temporary barricading at Hotels, Hospitals
Railway Stations, Air-port, Bus Terminals, etc...



RSTC - 500 PR
(Height : 500mm)
Weight - 1.8 kg



RSTC - 750 PR
(Medium Weight)
Weight-2.5 kg



RSTC-750L
(Light Base)
Weight-1.2 kg



RSTC - 750H
(Heavy Weight)
Weight-4.3 kg, Height - 750mm
Base - 380 x 380 mm



RSTC - 1000
(1 Meter Cone)
Weight-5.5 kg

METAL PIPE BOLLARD

Meant to guide the Traffic for Safe Direction Generally installed at the crossing/start of central verge/diversions etc. Consists of 2/3 plates

- Square
- Message Plate (Optional)
- Round Plate mounted on Powder coated M.S. Pipe



RAISED PAVEMENT MARKER/CAT'S EYE/ROAD STUDS

Designed to provide Enhanced, Dependable road Guidance to motorists in bad weather conditions. Much Better than glass beads markers; these are visible from long distances. These are installed with **Special Hot Melt Bitumen Adhesive** avoiding Nails etc. which can have a harmful effect on the road.

Meets or Exceeds ASTM D - 4280

<p>3M 290 Series</p>  <p>ABS Cat's Eye 90 x 110 x 17mm</p> <p>Conforms ASTM Standards</p>	<p>3M 290 Series</p>  <p>ABS Cat's Eye 90 x 110 x 17mm</p> <p>Conforms ASTM Standards</p>	<p>Avery Dennison C-80 Series Ennis Paint</p>  <p>High Impact Polymer 81 x 116 x 17 mm</p> <p>Conforms ASTM Standards</p>	<p>GP-DM-01A</p>  <p>ABS Material 100mm X 100mm X 20 mm</p> <p>Two Side Acrylic Plastic Reflectors Has larger reflective Area Cellular Lens Design allows lens to Continue functioning even after impact / damage.</p> <p>Conforms ASTM Standards</p>
<p>GP-733</p>  <p>ABS Material 100mm X 100mm X 20 mm</p> <p>Two Side Acrylic Plastic Reflectors</p> <p>Conforms ASTM Standards</p>	<p>GP-733 SHIBO</p>  <p>ABS Material SHIBO 100mm X 100mm X 20 mm</p> <p>Two Side Acrylic Plastic Reflectors</p> <p>Conforms ASTM Standards</p>	<p>GP-733A (With Two Nails)</p>  <p>ABS Material 100mm X 100mm X 20 mm</p> <p>Two Side Acrylic Plastic Reflectors</p> <p>Conforms ASTM Standards</p>	<p>GP-733B (With Central Hole)</p>  <p>ABS Material 100mm X 100mm X 20 mm</p> <p>Two Side Acrylic Plastic Reflectors</p> <p>Two Thumbs</p> <p>Conforms ASTM Standards</p>
<p>GP-734</p>  <p>ABS Material (with Nail) 100 X 100 X 20 mm</p> <p>19 Beads Each Side</p>	<p>GP-777P</p>  <p>ABS Stud with Stem 110mm X 128mm X 30 mm</p> <p>Two Side Acrylic Plastic Reflectors</p>	<p>GP-DM-02</p>  <p>ABS Material (with Stem) 100mm X 100mm X 20 mm</p> <p>Two Side Acrylic Plastic Reflectors</p> <p>Conforms ASTM Standards</p>	<p>Accessories</p>  <p>Squeeze</p>

ALUMINIUM ALLOY PRESSURE DIE CAST

<p>GP/RS-731</p>  <p>Aluminium Alloy (with Square Nail) 100 x 100 x 20 mm</p> <p>Two Side Retro Reflectors</p>	<p>GP/RS-732</p>  <p>Aluminium Alloy (with Stem) 100 x 100 x 20 mm</p> <p>Two Side Retro Reflectors</p>	<p>GP/RS-741</p>  <p>Aluminium Alloy (with Stem) 100 x 100 x 20 mm</p> <p>Two Side Retro Reflectors</p>	<p>GP/RS-742</p>  <p>Aluminium Alloy (with Square Nail) 100 x 100 x 20 mm</p> <p>Two Side Retro Reflectors</p>
---	--	---	---

MEDIAN MARKER - MM2 (Double Side), MM1 (Single Side)

Latest High Technology Safety Against Median Crashes

Median Marker is a New High Technology Reflective Product. It offers greatest visibility of Medians during Night Time conditions. It helps in reducing Accidents & increases Safety on the Road. Made of Tough, Impact Resistant Thermoplastic Body with an Isosceles Trapezoidal structure.

Reflective surface-round or square shape reflector available in Red / Yellow / White colour.

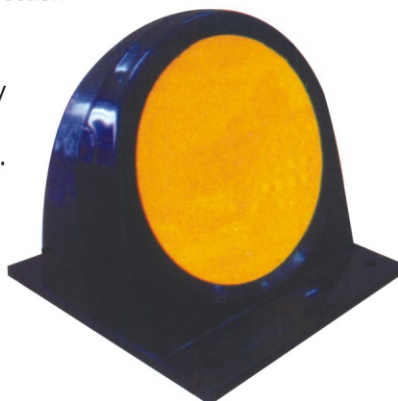
Features :

- For use in City & Highway Driving Conditions
- Embedded Reflective Material
- Excellent Reflectivity using Microprismatic Reflective Sheeting conforming as per ASTM D4956 Specification
- Inclined Reflective Surface for High Reflection
- Self Cleaning Design
- Best Day & Night Visibility
- Great Long & Short Distance Reflectivity
- Tough Engineering Plastic Body
- Dimension 120 x 100 x 100 mm approx.

Applications :

- Lane Divider
- Gap in Median
- Roundabouts
- Curves
- Kerbs
- Flyovers

RSAMM - 2Y



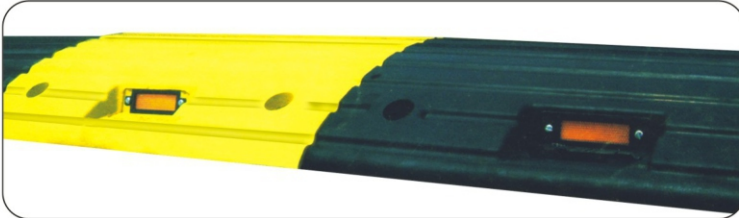
RSMM - 2Y



MODULUR SPEED BREAKER/RUMBLER

Made of Sturdy Plastic (ABS), these Bumps offer high resistance to severe impacts. The interlocking grip design allows it to behave like one single Bump. The precoloured materials (Black & yellow) and UV stabilisers result in Permanent colours which does not fade easily. Acrylic Reflectors fixed on front & back help in identifying the location of the speed breaker from a large distance.

RUBBERISED



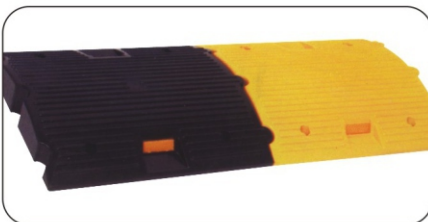
GSB - 50 500 x 450 x 50 mm
GSB - 75 500 x 450 x 75 mm

ABS



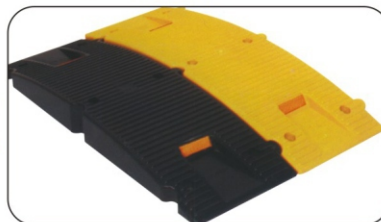
GP 1005
250 X 350 X 50 mm

ABS



GP1001
500 x 425 x 75 mm

ABS



GP 1006
250 x 750 x 75 mm

Model	Material	Height	Width	Length
GSB - 50	Rubber	50mm	400mm	500mm
GSB - 75	Rubber	75mm	400mm	500mm
GP-1005	ABS	50mm	350mm	250mm
GP-1001	ABS	75mm	425mm	500mm
GP-1006	ABS	75mm	750mm	250mm

50mm High Slows Speed to 10-20 kmph
75mm High Slows Speed to 5-10 kmph

- › Available in Black and Yellow Combination for Greater Visibility
- › Pre Coloured Material,
- › Does not require Repainting
- › Instant Installation with application of Epoxy and Spikes for Anchoring
- › All Segments can be purchased separately
- › Comes with a Standard Skid Resistant Base
- › UV, Moisture and Temperature Resistant
- › Modular Design provides Flexibility to suit any size of Road

ROAD SAFETY CONVEX MIRRORS

- Made up of Polycarbonate Reflective Mirrors.
- Body is made of ABS/Fiber/Plastic.
- Suitable for Indoor/Outdoor use with Hood.
- Complete with Mounting Hardware (without pipe).



RSCM - 45



RSCM - 60



RSCM - 80



RSCM - 100

DELINEATORS / BOLLARDS

SPRING POST / REBOUNDABLE DELINEATOR

Made of Special Strong Flexible UV Protected Poly-Urethane Material. It reduces road accidents by providing an advance warning. Its excellent reboundability quickly restores its original state without doing any damage to the vehicle as well as spring post.

- Made of Strong Flexible UV Protected PU
- Single Piece, No Joint for Greater Durability
- Three Reflective Bands
- Extremely High Quality of Reflecting Sheeting used
- Very Durable

Available in 3 Sizes

- RSSP - 450 450x80x200mm
- RSSP - 600 600x80x200mm
- RSSP - 750 750x80x200mm

Applications

- Centre Lane Division
- Dangerous U-Turns
- Dangerous Medians
- Construction Zones
- No-Entry Zones
- Multi Lanes
- Centre Verge
- Sharp Curves
- Parking Lots
- Highways
- T-Zones



Installation Procedure :

- Clean the Area where Spring Post is to be Installed
- Mark the Nail Points
- Grout the holes & Clean the surface again.
- Mix Epoxy & Hardner in proper ratio & pour in the holes made
- Place the spring post & fix the bolts with hammer

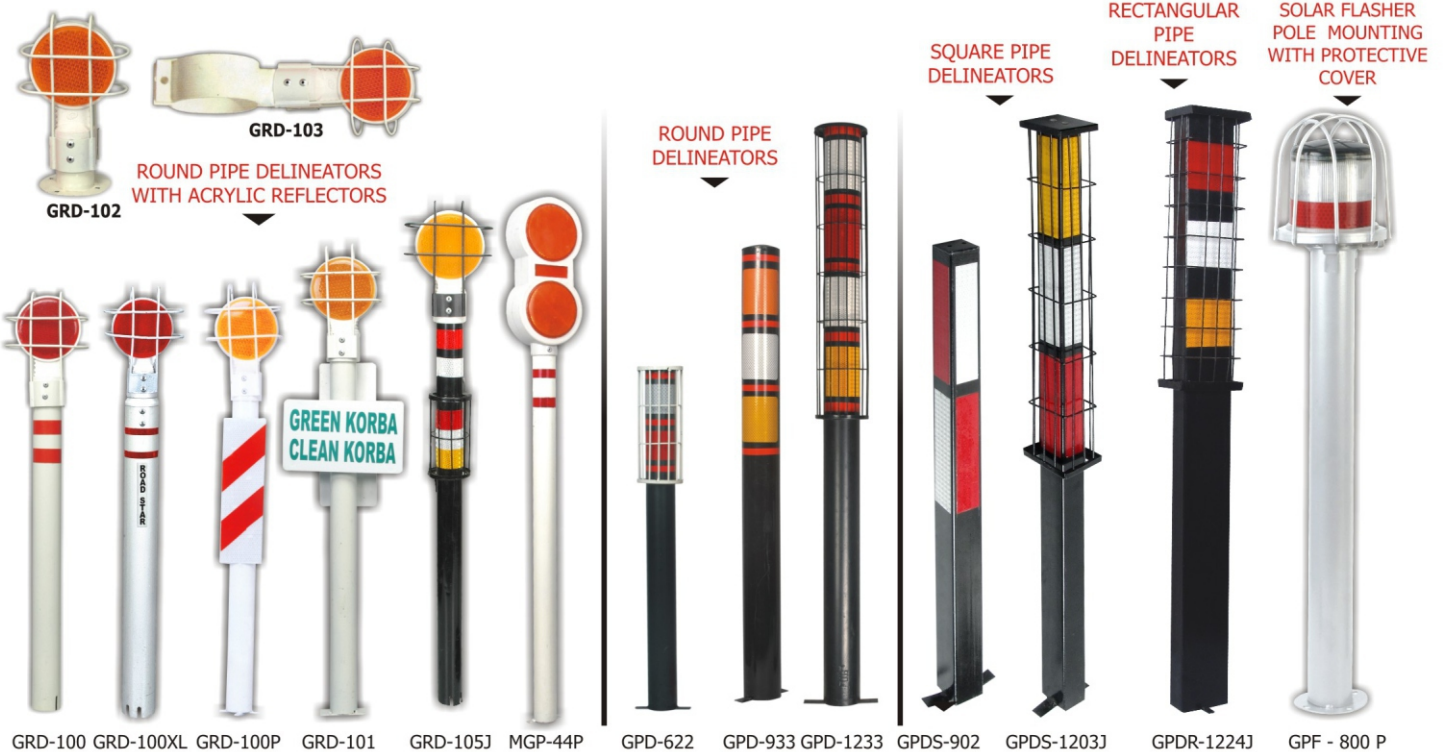
DELINEATORS

The Delineators are suitable for all kinds of roads. Their reflectors give best reflective performance to show the road geometry during day and night making it convenient for drivers and keep them away from road hazards. These result in avoidance of accidents

Applications

- Dangerous Curves
- Central Verge
- Traffic Island
- Tunnels/Bridges
- Road Medians

(The Delineators are available in different fittings/sizes for different purposes)



ROAD FURNITURE & ACCESSORIES
EVERY CUSTOMER IS OUR BEST CUSTOMER

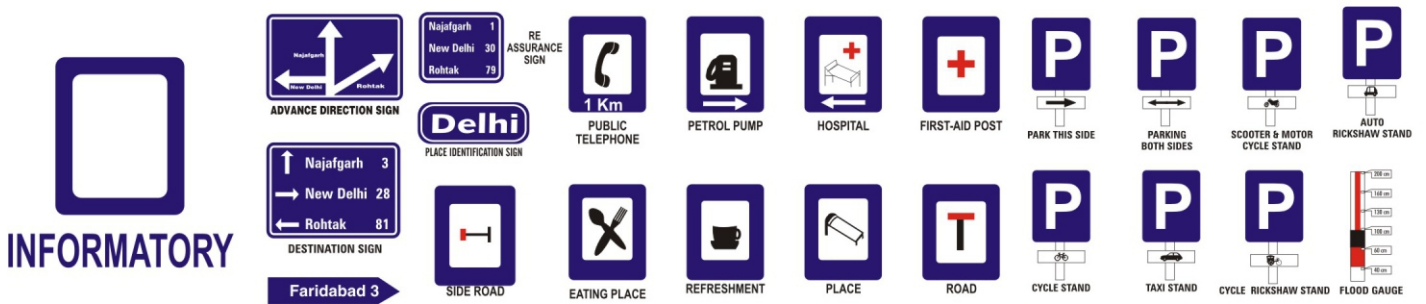
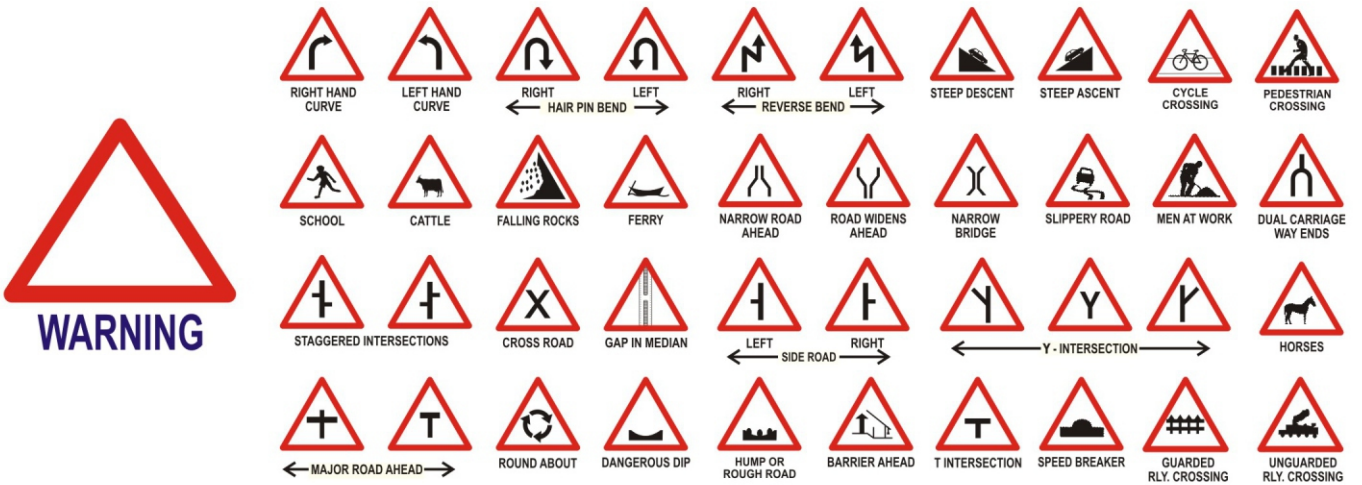
1 Dollar Imports



ROAD SAFETY SIGNS

ROAD SIGNS

CONFORMING TO IRC : 67-2001 STANDARD



Specifications

Substrate :	2mm thick Aluminium Sheet with degreasing treatment & fine grinding on front side for proper pasting of Reflective sheet & degreasing treatment & stove enamel paint on backside.
Reflective Material	* Engineering Grade/Safety Grade * High Intensity Grade (Encapsulated Lens type) * High Intensity Prismatic * Micro prismatic Lens (Diamond Grade/OMNI Grade Type VIII & IX)
Symbols/ Messages / Lettering/Border:	Screen Printed/Cut-outs.

Sizes of Signs

Signs	Shape	Normal Size (mm)	Small Size (mm)
Mandatory			
i) Stop Sign	Octagonal	900	600
ii) Give way sign (Inverted)	Equilateral triangle	900	600
ii) Others	Circular	600	400
Warning	Equilateral Triangle	900	600
Informatory	Rectangle	800x600	600x450





*SOLUTIONS
FOR
ROAD SAFETY*



1 Dollar Imports

1 Dollar Imports

E-mail : farhanbinsamad@gmail.com

info@1dollarimports.com

Call or Whatsapp us : +91-7088900335

www.1dollarimports.com

• **USA** • **INDIA** • **MIDDLE EAST**